



# INDOFINE Chemical Company, Inc.

121 Stryker Lane, Bldg. 30, Suite 1 • Hillsborough, NJ 08844 • U.S.A.

Phone: (908) 359-6778 • FAX: (908) 359-1179

website: [www.indofinechemical.com](http://www.indofinechemical.com)

e-mail: [chemical@indofinechemical.com](mailto:chemical@indofinechemical.com)

## CERTIFICATE OF ANALYSIS

Catalog Number: 19-119

Product Name: **6-CHLORO-3(2',4'-DICHLOROPHENYL)-4-METHYLCOUMARIN**

Lot Number: 99096

Chemical Formula: C<sub>16</sub>H<sub>9</sub>Cl<sub>3</sub>O<sub>2</sub>

Molecular Weight: 339.61

Melting Point: 203-205°C

Appearance: White fluffy powder

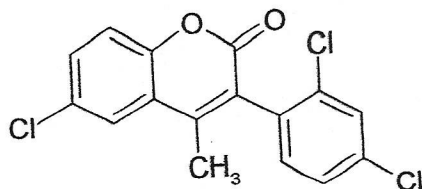
Solubility: Soluble in Chloroform

TLC: Hexane:Ethyl acetate (9:1)

NMR Spectrum: Enclosed (Confirms to the structure)

Storage: Cool dry place

Purity (HPLC): 99.80%



# ICC **INDOFINE Chemical Company, Inc.**

121 Stryker Lane, Bldg. 30, Suite 1 • Hillsborough, NJ 08844 • U.S.A.

Phone: (908) 359-6778 • FAX: (908) 359-1179

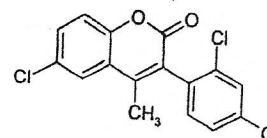
website: [www.indofinechemical.com](http://www.indofinechemical.com)

e-mail: [chemical@indofinechemical.com](mailto:chemical@indofinechemical.com)

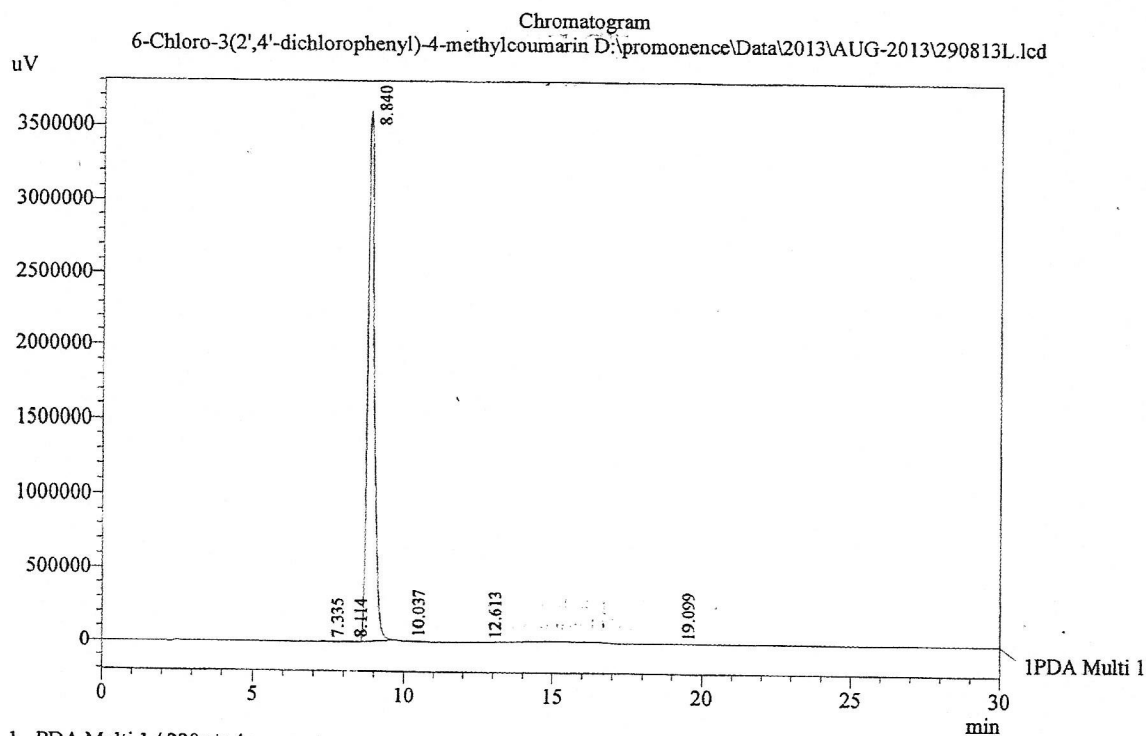
## HPLC ANALYSIS

Acquired by : Sanjeev  
Sample Name : 6-Chloro-3(2',4'-dichlorophenyl)-4-methylcoumarin  
Sample ID : Lot No: 99096  
Injection Volume : 20 uL  
Data Filename : 290813L.lcd  
Method Filename : Linear Isocratic.M.lcm

Catalog No.: 19-119  
Product Name: 6-Chloro-3(2',4'-dichlorophenyl)-4-methylcoumarin  
Lot No.: 99096



Column : LUNA C-18(2), (250mm x4.6mm 5.0μ)  
Flow : 1.000 mL/min.  
Mobile Phase : A(20% of 0.05% TFA in water) B(80% of Acetonitrile)  
Diluent : Acetonitrile



PeakTable

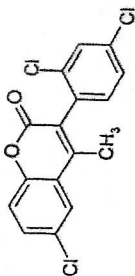
PDA Ch1 220nm 4nm

Peak#	Name	Ret. Time	Area	Area %	Relative Retention Time
1	RT:7.335	7.335	16457	0.03	0.83
2	RT:8.114	8.114	44059	0.08	0.92
3	RT:8.840	8.840	55877727	99.80	1.00
4	RT:10.037	10.037	36333	0.06	1.14
5	RT:12.613	12.613	5137	0.01	1.43
6	RT:19.099	19.099	10223	0.02	2.16
Total			55989936	100.00	



INDOFINE Chemical Company, Inc.  
 121 STRYKER LANE  
 BLDG. 30, SUITE 1  
 HILLSBOROUGH, NJ 08844

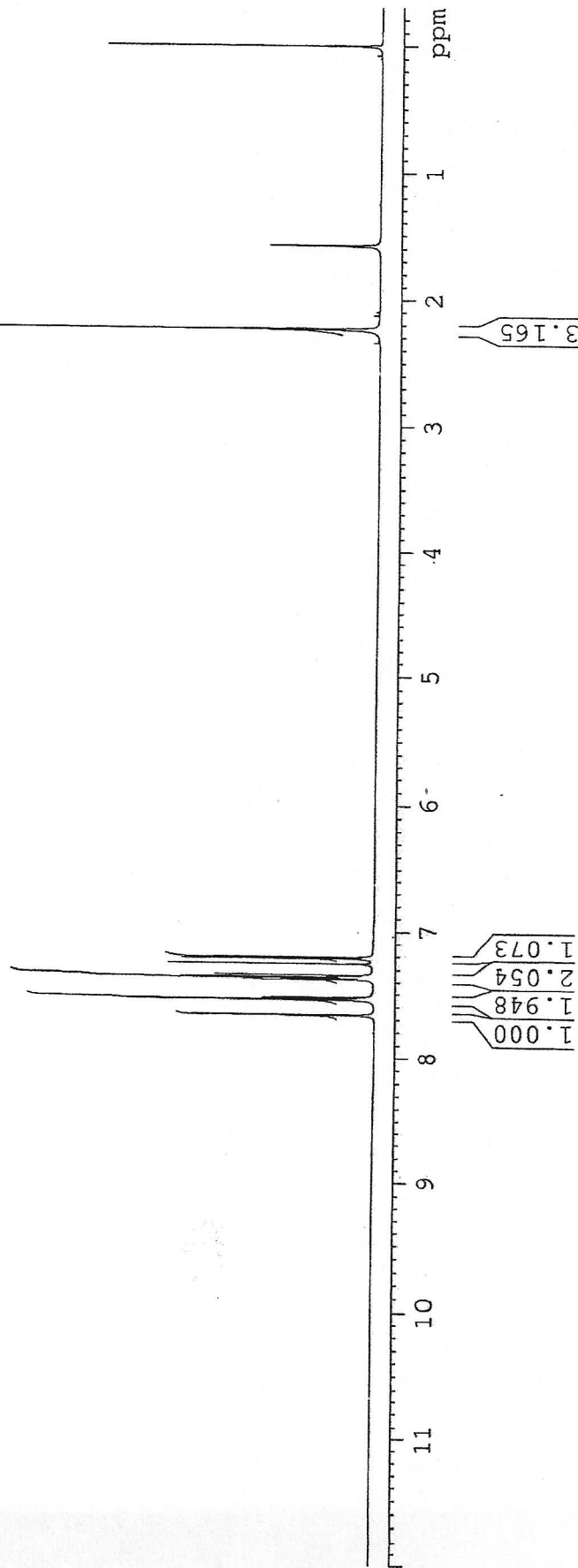
Catalog No.: 19-119  
 Product Name: 6-Chloro-3(2',4'-dichlorophenyl)-4-methylcoumarin  
 Lot No.: 99096



SOLVENT CDC13  
 NS 7  
 DS 0  
 SWH 10775.862 Hz  
 FIDRES 0.359219 Hz  
 AQ 1.3319572 sec  
 RG 20.2  
 DW 46.400 usec  
 DE 6.00 usec  
 TE 298.2 K  
 D1 1.50000000 sec  
 TD0 1

1H IN CDCL3  
 AVANCE-600

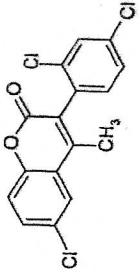
===== CHANNEL f1 =====  
 NUC1 1H  
 P1 7.50 usec  
 PL1 2.60 dB  
 PL1W 6.62584448 W  
 SF01 600.3348457 MHz  
 SI 32768  
 SF 600.3300123 MHz  
 WDW EM  
 SSB 0  
 LB 0.30 Hz  
 GB 0  
 PC 1.00





INDOFINE Chemical Company, Inc.  
 121 STRYKER LANE  
 BLDG. 30, SUITE 1  
 HILLSBOROUGH, NJ 08844

Catalog No.: 19-119  
 Product Name: 6-Chloro-3(2',4'-dichlorophenyl)-4-methylcoumarin  
 Lot No.: 99096



SOLVENT CDCL3  
 NS 7  
 DS 0  
 SWH 10775.862 Hz  
 FIDRES 0.359219 Hz  
 AQ 1.3919572 sec  
 RG 20.2  
 DW 46.400 usec  
 DE 6.00 usec  
 TE 298.2 K  
 D1 1.50000000 sec  
 TD0 1

1H IN CDCL3  
 AVANCE-600

----- CHANNEL f1 -----  
 NUC1 1H  
 P1 7.50 usec  
 PL1 2.60 dB  
 PLLW 6.62584448 W  
 SFO1 600.3348457 MHz  
 S+ 32768  
 SF 600.3300123 MHz  
 WDW EM  
 SSB 0  
 LB 0.30 Hz  
 GB 0  
 PC 1.00

